

The Elgiva

TECHNICAL INFORMATION PACK

TECHNICAL MANAGER: TRISTAN COLLETT

Tel : 01494 582903
Fax : 01494 592901
Email : techoffice@elgiva.com

The Elgiva

Technical Information Pack

Contents

1. Stage Measurements
2. Flying Rig Layout
3. Stage and Auditorium Measurements
(Plan & Elevation Diagrams)
4. Stage Lighting Equipment
5. Lighting Circuit Plan
6. Sound Equipment
7. Sound Patch Set Up
8. Cinema & AV ó Projection Equipment
9. Electrical Apparatus Form

The Elgiva

Stage Measurements

Proscenium Opening / Stage

The stage is a Standard Proscenium type stage with a fixed height proscenium opening. The stage floor is flat and of sprung plywood construction.

Width of Proscenium	9.49M (31ø10 approx)	Recommended stage width
Actual Stage Width	13.03M (42ø90 approx)	With stage left x-over stairs available
	15.00M (49ø20 approx)	With stage left x-over stairs unavailable
Height of Proscenium	4.01M (13ø10 approx)	
Depth of Stage	7.43M (24ø40 approx)	Measured to FOH tab line
	9.43M (30ø100 approx)	Including Mechanical Pit Lift
Stage Height	0.88M (2ø100 approx)	Measured from auditorium
Grid Height	10.97M (35ø110 approx)	Stage floor to highest Flybar dead

Mechanical Pit Lift

The Pit Lift is a Hydraulic Pit lift with three preset positions, Pit, Auditorium & Stage. The lift surface is the same as the auditorium floor i.e. parquet not matt black as the stage surface.

Width	7.98M (26ø20 approx)
Depth	2.00M (6ø60 approx)
Static SWL	12,000kg
Dynamic SWL	4,000kg

Orchestra Pit

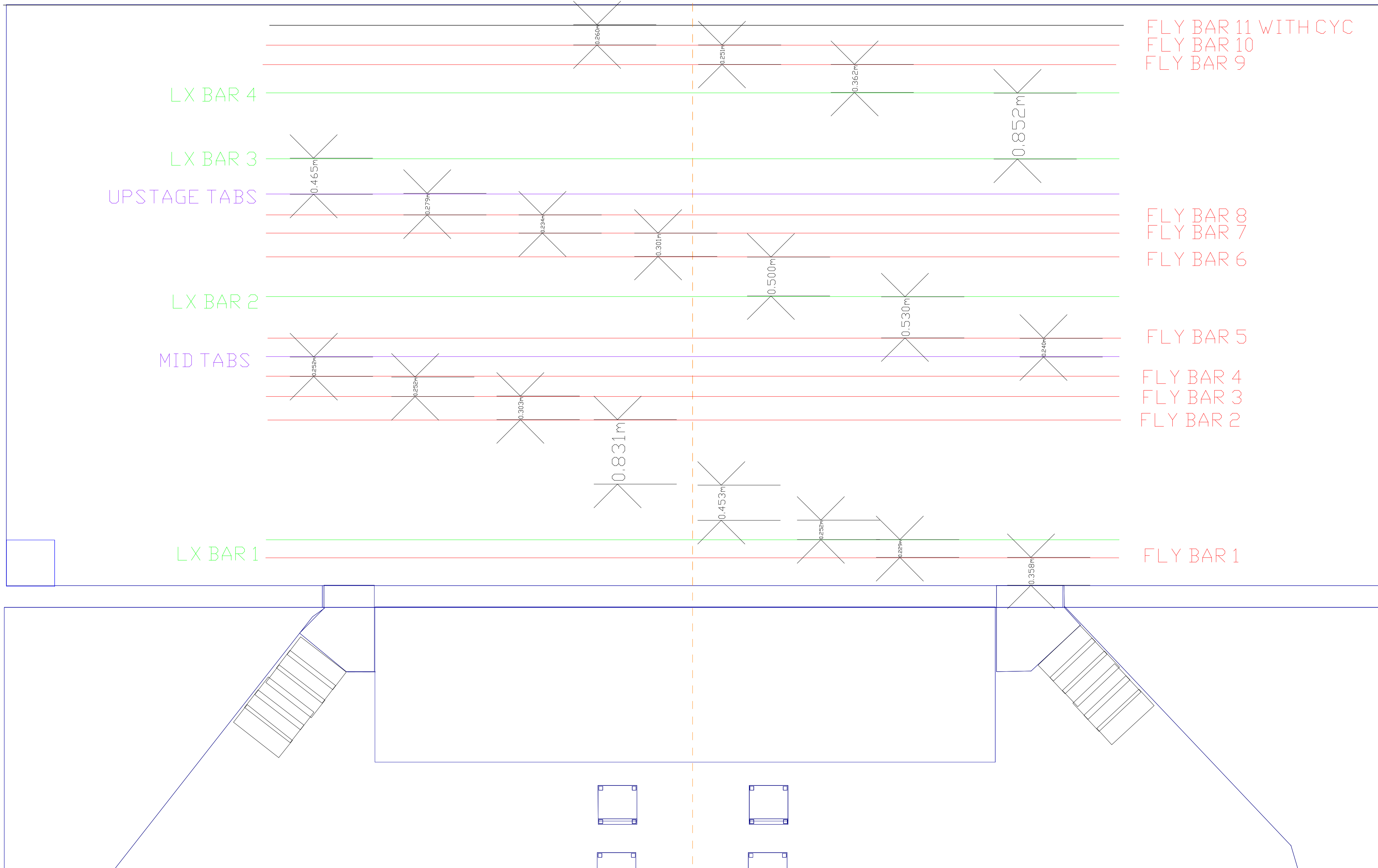
The orchestra pit is measured with the Pit lift fully lowered & extends under the stage surface.

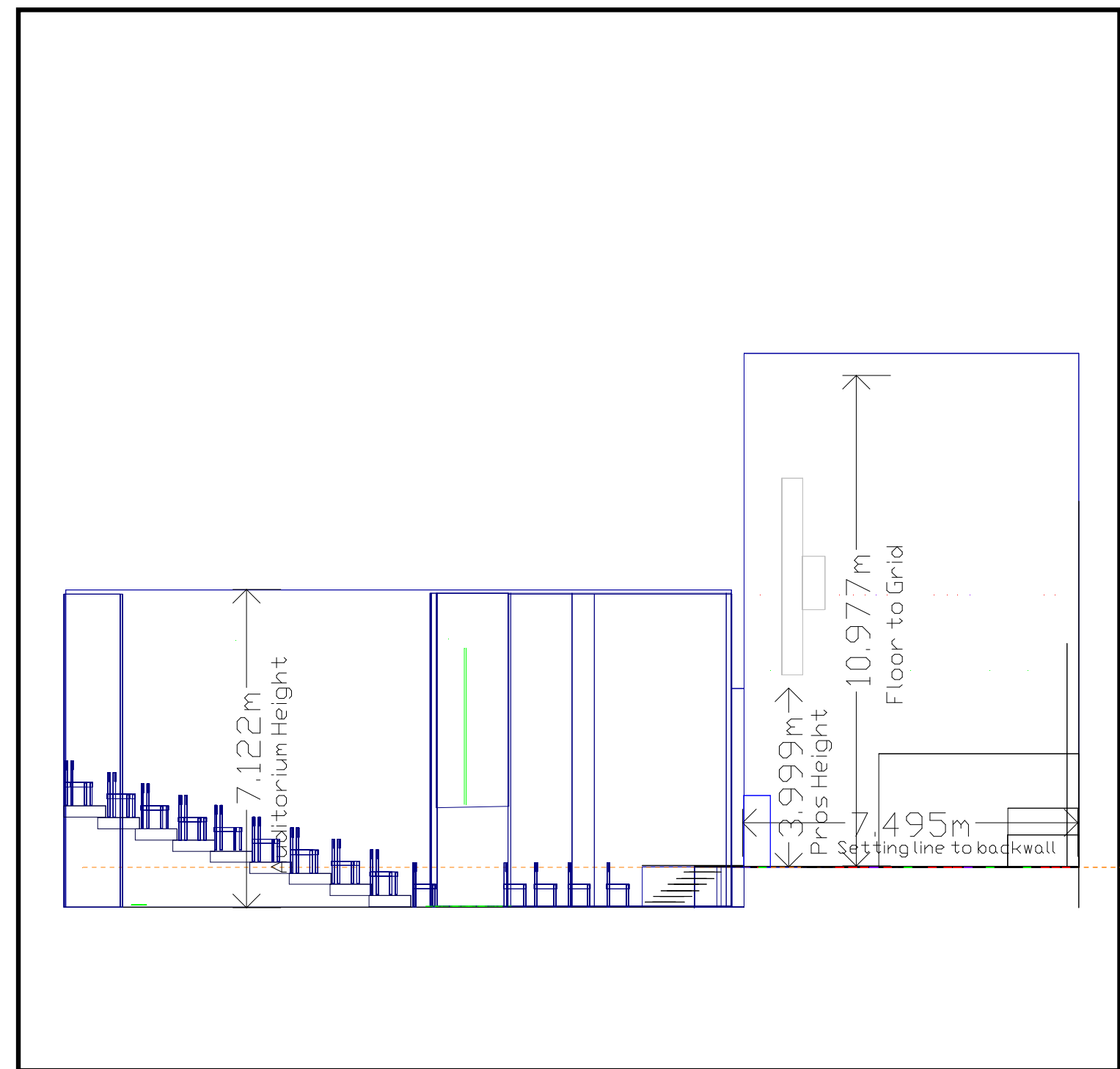
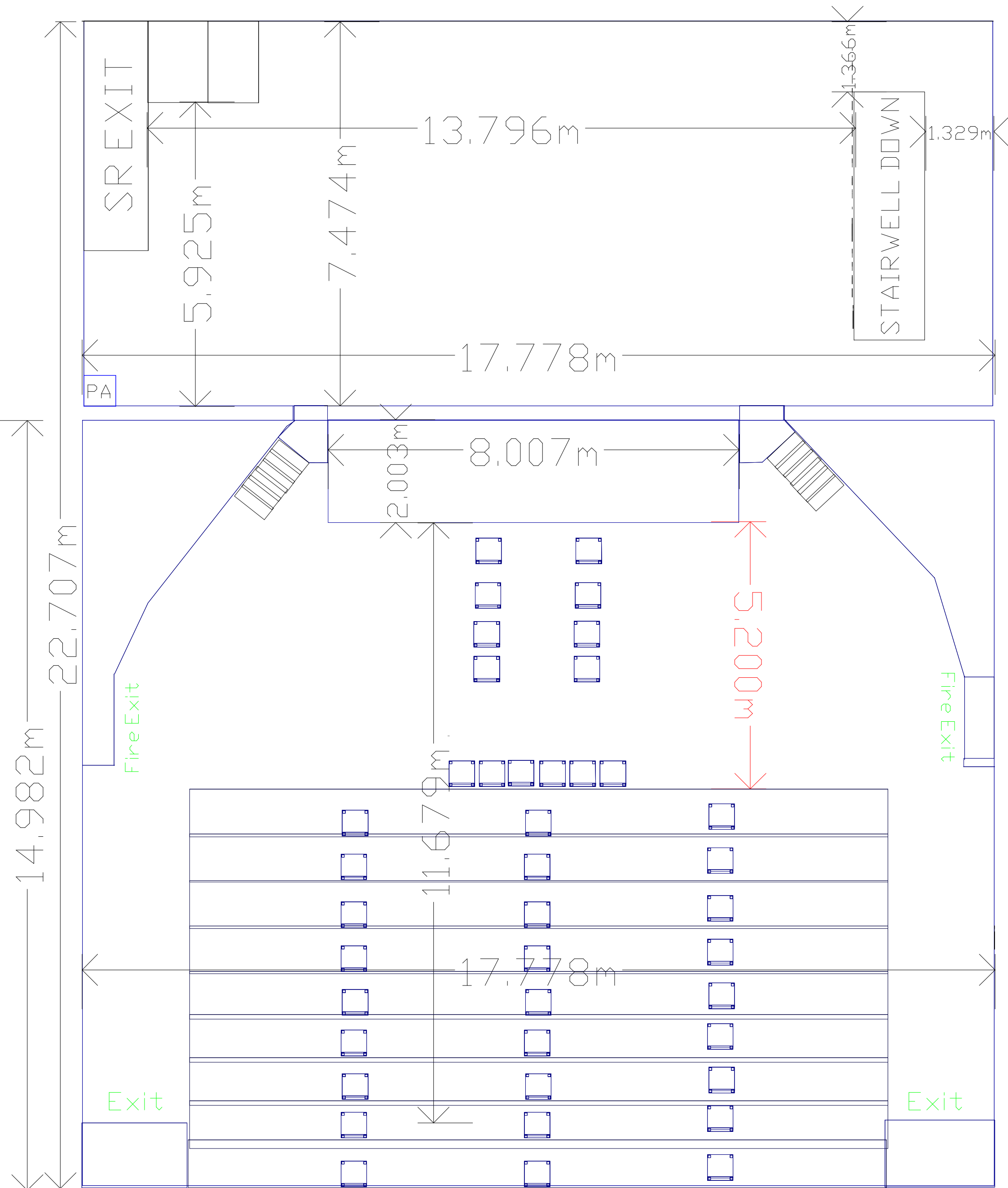
Width	7.98M (26ø20 approx)	Useable area
Depth	3.95M (12ø110 approx)	Measured from under stage to edge of pit wall
Pit depth	1.69M (5ø70 approx)	Measured to auditorium level

Stage Flying Equipment Details

The stage is equipped with the following equipment. All equipment is stage left unless specified otherwise.

- 1 X Manual Front of House tab winch (fixed position)
- 1 X 8.53M x 3.50M (28ø x 11ø60 approx) hard framed cinema screen (electric hoist)
- 2 X Winched Tab tracks (fixed position, both with black runners)
- 4 X Winched LX bars (180kg Max loading per bar)
- 11 X Four line hemp sets (100kg Max loading per bar)
- 2 X Front of House LX Bars Fixed position (250k & 150k respectively)
- 2 X Front of House Booms Fixed position (150k each)





The Elgiva

Stage Lighting Equipment

Control Room

1. 1 x Zero 88 Bull Frog Lighting Console
(48/96 way & 12 intelligent fixtures on 2 DMX Universes)
2. 1 x Zero 88 Sirius 48 Lighting Console (48 way DMX)
3. 1 x Jands Hog 500 Lighting Console (not included in standard hire)
4. 2 x 24 Channel ADB Eurorack 60 Dimmer racks (3kw per Channel)
5. 1 x Testa 1200w MSR Followspot

On Stage

1. 2 x 6 Channel Zero 88 Betapack 2 Dimmer packs (2kw per Channel)
2. 1 x Jands DD8 (Eight way Opto-Isolated DMX splitter)

Luminaire Stock

1. 6 x Cantata Zoom 18-32° 1000w Profiles ó Gel size 185 x 185mm
2. 10 x ETC Source Four Zoom 15-30° 575w Profiles ó Gel size 190 x 190mm
3. 2 x ETC Source Four Zoom 25-50° 575w Profiles ó Gel size 190 x 190mm
4. 4 x Source 4 Junior Zoom 25-50° 575w Profiles
5. 4 x Selecon Acclaim Axial 24-44° 650w Profiles ó Gel size 125 x 125mm
6. 6 x Selecon Rama 1200w Fresnel
7. 20 x Selecon Acclaim 6-60° 650w Fresnels ó Gel size 125 x 125mm
8. 20 x Parcans (fitted with CP62 wide angle lamps as standard) ó Gel size 250 x 250mm
9. 1 x Spotlight Black Gun 400w
10. 4 x 4 cell battens (500w each cell)
11. 6 x Robe 250AT Colour Spot (not included in standard hire)
12. 8 x Colour Scrollers (for parcan use only, not included in standard hire))

The Elgiva - LX Circuit Plan

Batten Bars - 3 Circuits



75 76 77 78 79 80 81 82 83 84 85 86

Stage Dips
91 92

LX 4

Stage Dips
93 94

63 64 65 66 67 68 69 70 71 72 73 74

Stage Dips
89 90

LX 3

Stage Dips
95 96

51 52 53 54 55 56 57 58 59 60 61 62

Stage Dips
87 88

LX 2

Stage Dips
97 98

39 40 41 42 43 44 45 46 47 48 49 50

LX 1

FOH Tabs

27 28

FOH 3

FOH 4

29 30

33 34

31 32

35 36

37 38

7 8 9 10 11 12 13 14 15 16 17 18 19 20 21 22 23 24 25 26

FOH 2

FOH 1 1 2 3 4 5 6

The Elgiva

Sound Equipment

Control Room

1. 1 x Soundcraft Live 8 32 Mixing Console
2. 1 x Yamaha SPX 900 Effects Processor (mono in, stereo out)
3. 1 x Tascam MD-CD1 dual CD/Mini Disk player
4. 1 x Yamaha QA2031A Graphic Equaliser (FOH)
5. 2 x DBX 231s 31 band Graphic Equaliser (4 x onstage mixes)
6. 1 x Yamaha 31 Band Single Graphic Equaliser (mix no. 5)
7. 3 x DBX 266XL Dual Compressors
8. 1 x Tecpro Intercom system

On Stage & FOH

1. 1 x Nexia SP system controller
(providing left, right, centre, sub feeds. Full equalisation & signal matrix)
2. 1 x DBX Driverack 260 system controller (for sub speakers)
3. 4 x MC2 T2000 Amplifiers (supplying left, right, centre & sub channels)
4. 2 x MC2 T1500 Amplifiers (supplying stage monitors)
5. 6 x EM Acoustics EM121 full range speakers (2 per side plus 2 centre FOH)
6. 2 x EM Acoustics EM81 full range speakers (1 per side FOH)
7. 2 x EM Acoustics EM215 sub bass speaker (1 per side)
8. 3 x Turbosound TFM212 low profile monitor speakers
9. 3 x Wharfedale EVP 15M NEO Monitor Speakers

Patch bay (Stage rack to Control room)

1. 32 x send XLR
2. 16 x send/returns XLR
3. 8 x return XLR
4. 4 x 15m 8-way XLR multicore looms to enable patching when FOH mixing position is used

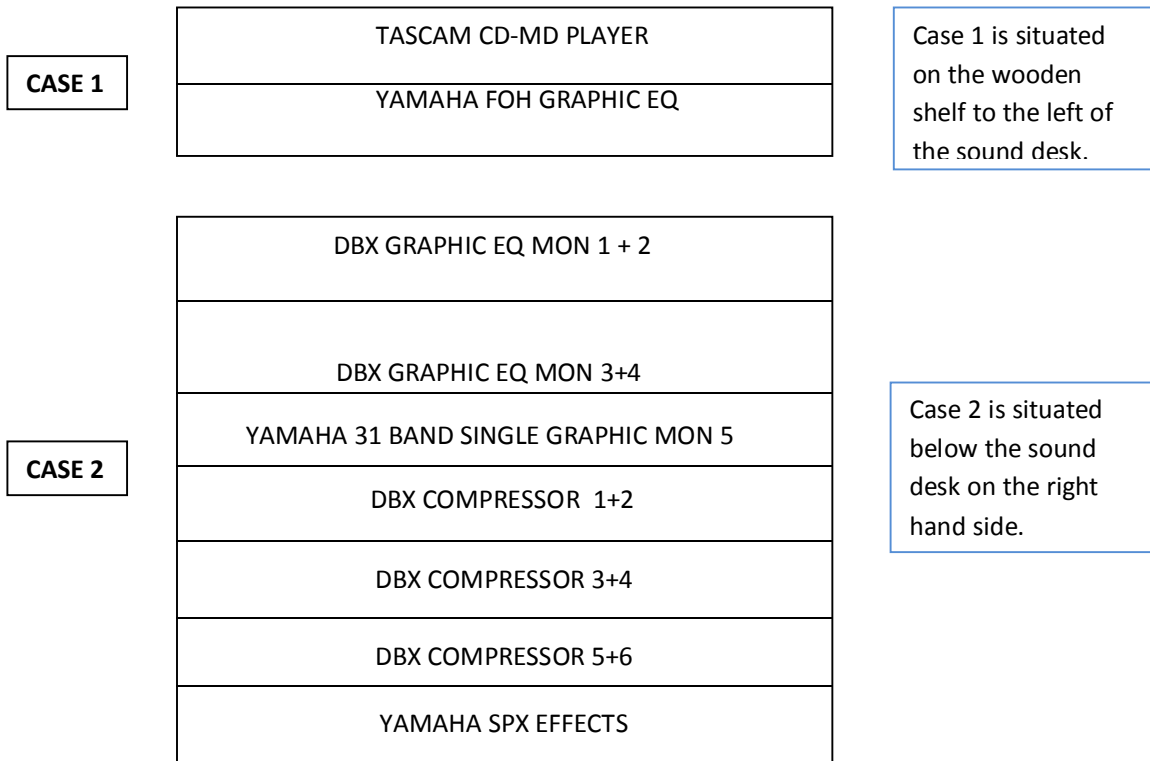
Microphones

1. 8 x Red 5 Audio RVD30 (Vocal and Instrument Mic)
2. 3 x Shure SM58 (Vocal Mic)
3. 2 x Shure SM57 (Instrument Mic)
4. 1 x Beyer Dynamic 7 piece Drumkit Mic Set
5. 6 x Behringer C2 Condenser Mics
6. 3 x Line 6 Digital Wireless Mics (packs with lav/headset boom mics)
7. 3 x Sennheiser G3 Radio Mics (packs with lav/headset boom mics)
8. 3 x Sennheiser G2 Radio Mics (packs with lav/headset boom mics)
9. 1 x Sennheiser G2 Hand Held Radio Mic
10. 3 x Sennheiser EW100 Radio Mics (packs with lav/headset boom mics)
11. 7 x Shure Radio Mics (packs with lavs)

Miscellaneous

1. 2 x EMO Passive DI
2. 3 x BSS AR-133 Active DI
3. 15 x Boom Mic Stands
4. 1 x Short Boom Mic Stand

SOUND PATCH AND SET UP FOR CONTROL ROOM



MAIN OUTS – Main L+R from desk to inputs on FOH graphic. Outputs from FOH graphic to L Feed and R feed on patch bay

MONITORS – Aux 1 into Input 1 on first monitor graphic eq. Output 1 from graphic eq into Mon 1 on patch bay

Aux 2 into input 2 on first monitor graphic eq. Output 2 from graphic eq into Mon 2 on patch bay

Aux 3 into input 1 on second monitor graphic eq. Output 1 from graphic eq into Mon 3 on patch bay

Aux 4 into input 2 on second monitor graphic eq. Output 2 from graphic eq into Mon 4 on patch bay.

Aux 5 into input of single Yamaha graphic. Output from single Yamaha graphic into Mon 5 on patch bay.

SFX – Aux 6 into input on SPX 900. Left out and right out from SPX 900 into stereo channel inputs on sound desk

<p>COMPRESSORS – Group insert 1 into input + output of channel 1 of compressor 1</p> <p style="padding-left: 40px;">Group insert 2 into input + output of channel 2 of compressor 2</p> <p style="padding-left: 40px;">Group insert 3 into input + output of channel 1 of compressor 3</p> <p style="padding-left: 40px;">Group insert 4 into input + output of channel 2 of compressor 4</p> <p style="padding-left: 40px;">Group insert 5 into input + output of channel 1 of compressor 5</p> <p style="padding-left: 40px;">Group insert 6 into input + output of channel 2 of compressor 6</p>	<p>(N.B. The 3 compressors are stereo compressors making 6 channels of compression. These are inserted into groups 1 – 6)</p> <p>(TIP = SEND)</p> <p>RING = RETURN)</p>
--	--

The Elgiva

Cinema & AV / Projection Equipment

35mm Film Projection

Projection Room

1. 1 x Cinemacannica Victoria 5 ó 35mm Projector
2. 1 x Cinemecannica CX/16H Lamphouse ó 1600w Xenon Lamp
3. 1 x Dolby CP500 Digital Processor (digital, SR, A-Type and Mono)
4. 3 x DNA 400 amplifiers
5. 1 x Sony MiniDisc Player

Stage / Auditorium

1. 3 x JBL 4671 Passive Speakers (flown with screen)
2. 12 x JBL TLX12 Surround Speakers
3. 1 x 400w SST 18400 Sub-Bass Speaker
4. 1 x 8.53M (28ø) x 3.50M (11ø6ö) hard framed cinema screen (flown)

Data Projection

Projection Room

1. 1 x Panasonic PT ó D5000 XGA ó DLP Projector
2. 1 x Panasonic DMP ó BDT120 Blu-Ray Disc Player

Stage / Auditorium

1. 1 x Philips LC 4345 LCD projector and cradle (Cradle size: 37cm x 31cm x 15cm approx.)

NB: Access for audio links between our projection room and our control room can be provided.
A cable run of 10m is recommended.



Electrical Apparatus Form

Hire Dates:.....

Function/Performance:.....

Hirer's Name:.....

Address:.....

.....

Tel No: (daytime) í í í í í í í í í í (evening)í í í í í í í í í

1. PLEASE STATE BELOW ALL ELECTRICAL EQUIPMENT YOU WISH TO BRING IN AND USE ON YOUR FUNCTION/PERFORMANCE:

2. ALL ELECTRICAL EQUIPMENT SHOULD HAVE BEEN TESTED BY A QUALIFIED ELECTRICIAN WITHIN THE LAST 12 MONTHS AND BE OF A STANDARD COVERED BY THE ELECTRICITY AT WORK REGULATIONS 1989.

PLEASE STATE WHEN AND BY WHOM YOUR ELECTRICAL EQUIPMENT WAS TESTED.

í í í í í í í í í í í í í í í í Date:í í í í í í í í í í ..

Name:í í í í í í í í í í

Signature:í í í í í í í í í ..

Position:í í í í í í í í í .