

# The Elgiva

## Technical Information Pack

1. Stage Measurements
2. Stage Plan
3. Flying Rig Layout
4. Stage and Auditorium Measurements  
(Plan & Elevation Diagrams)
5. Stage Lighting Equipment
6. Default Lighting Rig
7. Lighting Rig Data
8. Lighting System Circuit Plan
9. Sound Equipment
10. Cinema & AV – Projection Equipment
11. Baby Grand Piano – Yamaha C7
12. Electrical Apparatus Form



Tristan Collett  
Operations & Technical Manager

Tel: 01494 582903  
Email: [techoffice@elgiva.com](mailto:techoffice@elgiva.com)

# The Elgiva

## Stage Measurements

### Proscenium Opening / Stage

The stage is a Standard Proscenium type stage with a fixed height proscenium opening. The stage floor is flat and of sprung plywood construction.

Width of Proscenium	9.50M (31' 1" approx)	Recommended stage width
Actual Stage Width	13.03M (42' 9" approx)	With stage left x-over stairs available
	15.00M (49' 2" approx)	With stage left x-over stairs unavailable
Height of Proscenium	4.01M (13' 1" approx)	
Depth of Stage	7.43M (24' 4" approx)	Measured to FOH tab line
	9.43M (30' 10" approx)	Including Mechanical Pit Lift
Stage Height	0.88M (2' 10" approx)	Measured from auditorium
Grid Height	10.97M (35' 11" approx)	Stage floor to highest fly bar dead

### Mechanical Pit Lift

The Pit Lift is a Hydraulic 'Pit lift' with three preset positions, Pit, Auditorium & Stage. The lift surface is the same as the auditorium floor i.e. parquet, not matt black as the stage surface.

Width	7.95M (26' 2" approx)
Depth	2.00M (6' 6" approx)
Static SWL	12,000kg
Dynamic SWL	4,000kg

### Orchestra Pit

The orchestra pit is measured with the 'Pit lift' fully lowered & extends under the stage surface.

Width	7.98M (26' 2" approx)	Useable area
Depth	3.95M (12' 11" approx)	Measured from under stage to edge of pit wall
Pit depth	1.69M (5' 7" approx)	Measured to auditorium level

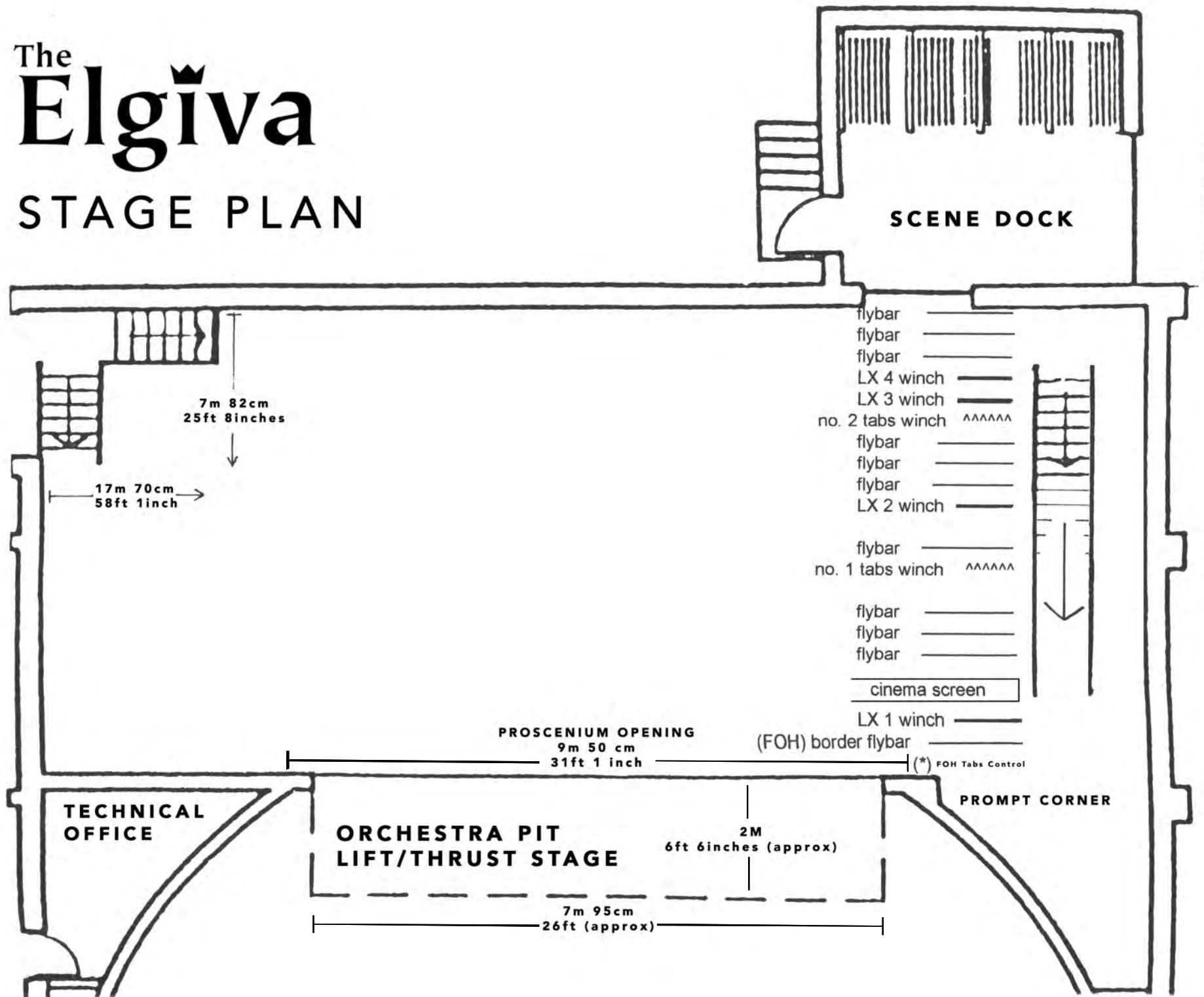
### Stage Flying Equipment Details

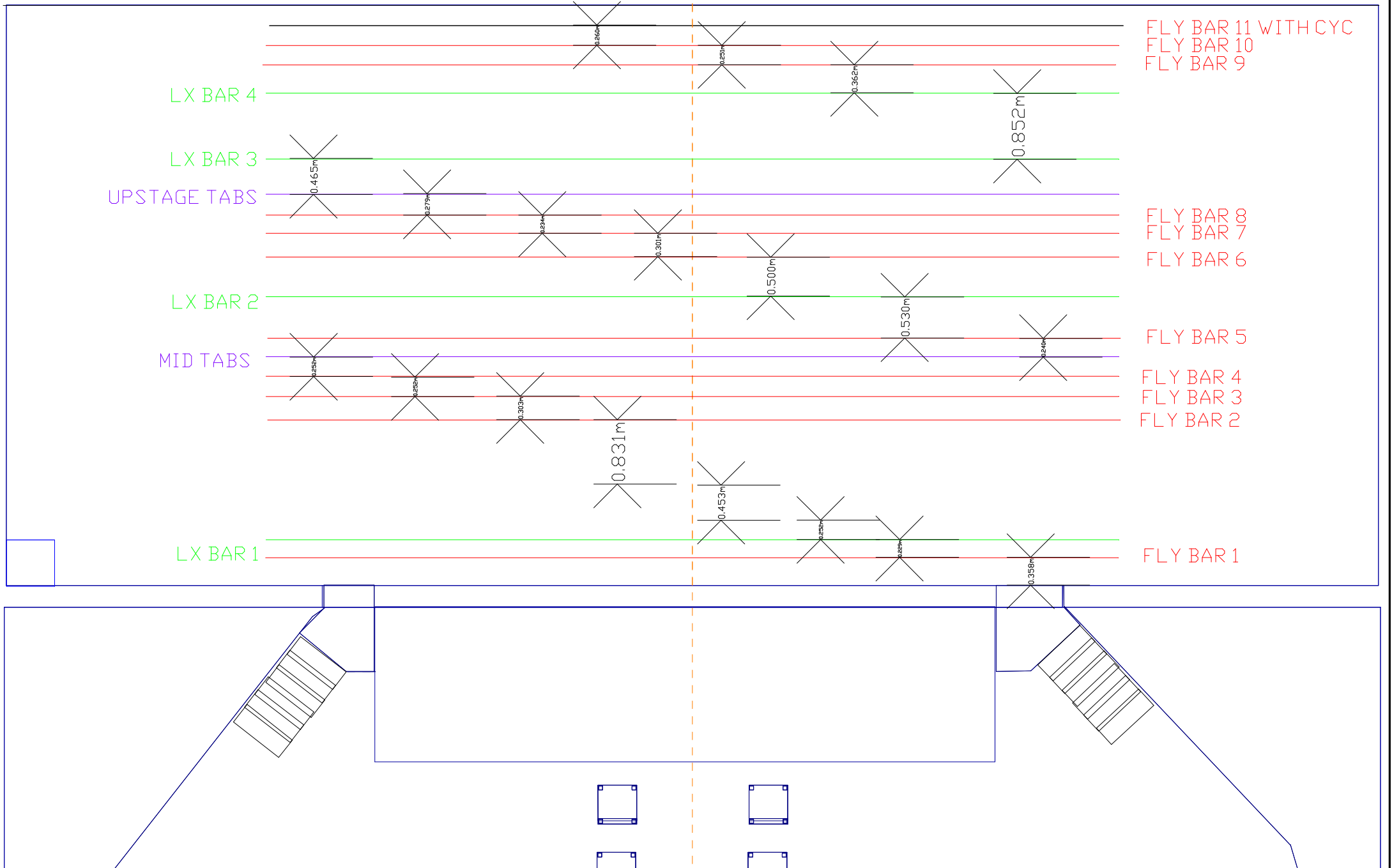
The stage is equipped with the following equipment. All equipment is stage left unless specified otherwise.

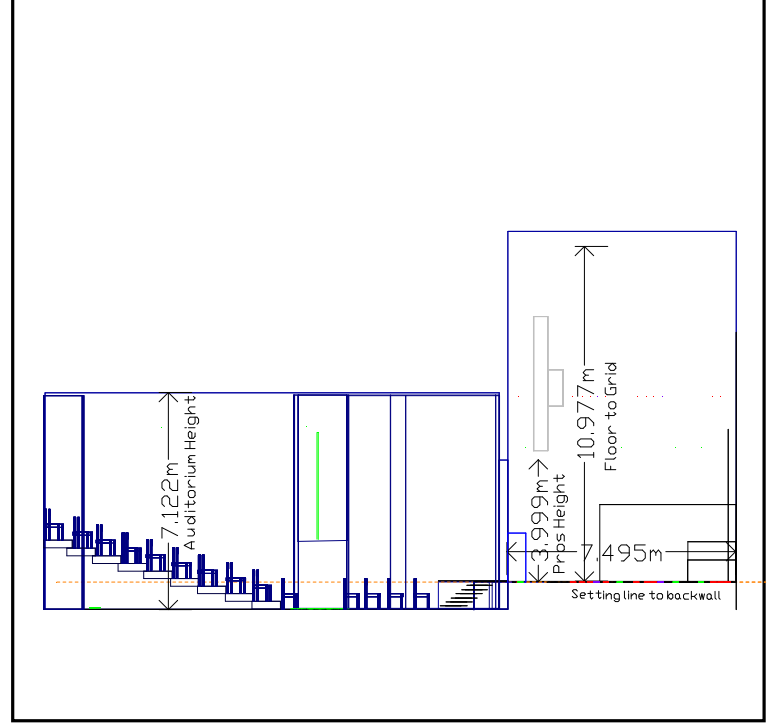
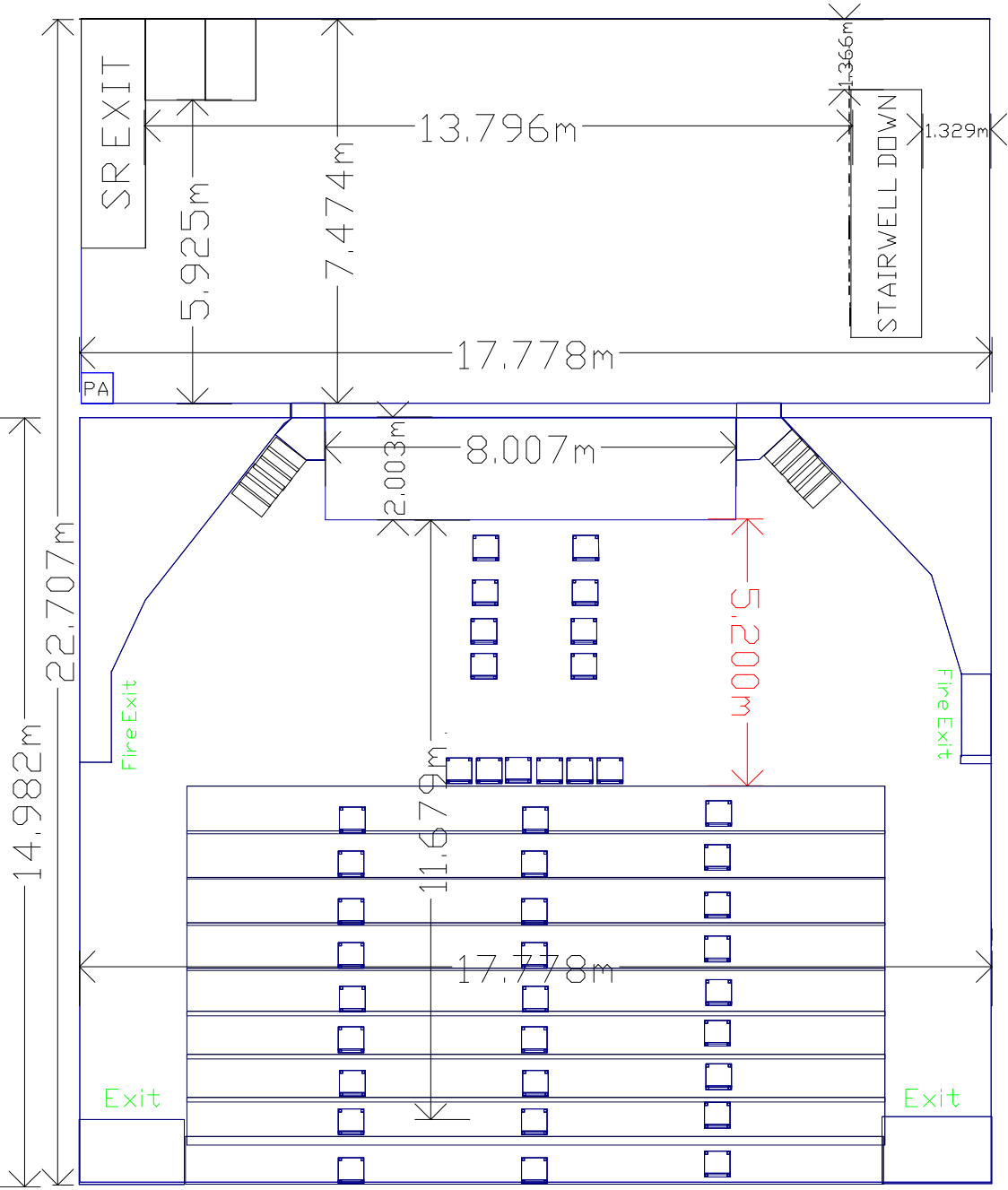
- 1 X Manual Front of House tab winch (fixed position)
- 1 X 8.53M x 3.50M (28' x 11' 6" approx) hard framed cinema screen (electric hoist)
- 2 X Winched Tab tracks (fixed position, both with black runners)
- 4 X Winched LX bars (180kg Max loading per bar)
- 11 X Four-line hemp sets (100kg Max loading per bar)
- 2 X Front of House LX Bars Fixed position (250k & 150k respectively)
- 2 X Front of House Booms Fixed position (150k each)

# The Elgiva

## STAGE PLAN







# The Elgiva

## Stage Lighting Equipment

### Control Room

1. 1 x Chroma-Q Vista EX Lighting Console
2. 1 x Zero 88 Orb XF Lighting Console
3. 2 x 24 Channel ADB Eurorack 60 Dimmer racks (3kw per Channel)
4. 1 x Testa 1200w MSR Followspot\*

### On Stage

1. 2 x 6 Channel Zero 88 Betapack 2 Dimmer packs (2kw per Channel)
2. 1 x Jands DD8 (8-way Opto-Isolated DMX splitter)

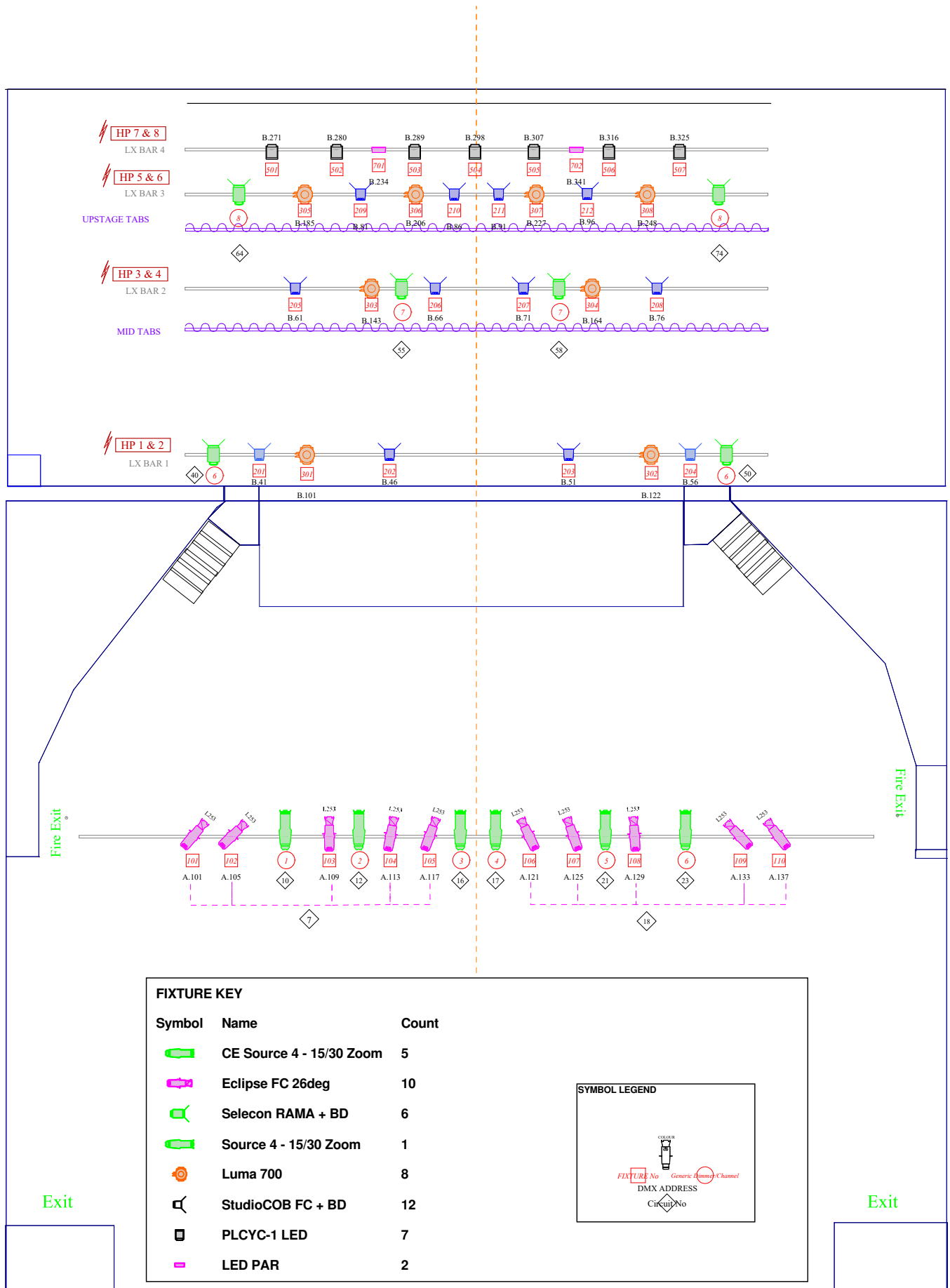
### Power

1 x 3-Phase 63A CEE Form supply (stage right). As standard, this is used to power our moving lights.

### Luminaire Stock

1. 10 x Prolights Eclipse 26° LED Profile (main FOH bar)
2. 12 x Prolights StudioCobFC 150W LED (on stage)
3. 7 x Selecon PLCYC LED Cyc Lights
4. 8 x Prolights Luma 700 Spot Moving Head\*
5. 2 x Lightmaxx Tour Platinum Wash LED Pro (rigged as backlight)
6. 10 x Stairville 20° LED Flood Panel 150
7. 6 x ETC Source Four Zoom 15-30° 575w Profiles – Gel size 190 x 190mm
8. 2 x ETC Source Four Zoom 25-50° 575w Profiles – Gel size 190 x 190mm
9. 4 x Source 4 Junior Zoom 25-50° 575w Profiles
10. 4 x Selecon Acclaim Axial 24-44° 650w Profiles – Gel size 125 x 125mm
11. 6 x Selecon Rama 1200w Fresnel
12. 10 x Selecon Acclaim 6-60° 650w Fresnels – Gel size 125 x 125mm
13. 10 x Parcans (fitted with CP62 wide angle lamps as standard) – Gel size 250 x 250mm
14. 1 x Spotlight 50° (approx.) Black Gun 400w UV Canon\*

\*Technical Services & Equipment Rate Card available upon request.



ELGIVA THEATRE  
 DEFAULT LIGHTING RIG  
 March 2019 (Ver 5.0)

See Accompanying  
 DATA Sheets V5.0  
 for Further Info  
 SCALE 1:25 @ A0

Drawn by Andy Mahaffey © 2019

Elgiva Theatre  
 Fixture Patch Sheet March 2019  
 Rev 5.0

Fix No	Type	DMX ADD	Circuit	Mode	Position	Colour/Bdoor	Purpose
1	Source 4 15/30 Zoom	A.1	10	N/A	FOH 1 BAR 1	O/W	FOH SPECIAL
2	Source 4 15/30 Zoom	A.2	12	N/A	FOH 1 BAR 1	O/W	FOH SPECIAL
3	Source 4 15/30 Zoom	A.3	16	N/A	FOH 1 BAR 1	O/W	FOH SPECIAL
4	Source 4 15/30 Zoom	A.4	17	N/A	FOH 1 BAR 1	O/W	FOH SPECIAL
5	Source 4 15/30 Zoom	A.5	21	N/A	FOH 1 BAR 1	O/W	FOH SPECIAL
6	Source 4 15/30 Zoom	A.6	23	N/A	FOH 1 BAR 1	O/W	FOH SPECIAL
7	2 x Selecon RAMA	A.7	40 + 50	N/A	LX BAR 2	O/W + BD	O/W DOWN STAGE WASH
8	2 x Selecon RAMA	A.8	55 + 58	N/A	LX BAR 2	O/W + BD	O/W MID STAGE WASH
9	2 x Selecon RAMA	A.9	64 + 74	N/A	LX BAR 3	O/W + BD	O/W UP STAGE WASH
101	Eclipse FC 26deg	A.101	7	Tour 4 Ch	FOH BAR 1	L253	STAGE WASH SL
102	Eclipse FC 26deg	A.105	7 (Loop Through)	Tour 4 Ch	FOH BAR 1	L253	STAGE WASH SL
103	Eclipse FC 26deg	A.109	7 (Loop Through)	Tour 4 Ch	FOH BAR 1	L253	GEN COV AREA 1
104	Eclipse FC 26deg	A.113	7 (Loop Through)	Tour 4 Ch	FOH BAR 1	L253	GEN COV AREA 2
105	Eclipse FC 26deg	A.117	7 (Loop Through)	Tour 4 Ch	FOH BAR 1	L253	GEN COV AREA 3
106	Eclipse FC 26deg	A.121	18	Tour 4 Ch	FOH BAR 1	L253	GEN COV AREA 1
107	Eclipse FC 26deg	A.125	18 (Loop Through)	Tour 4 Ch	FOH BAR 1	L253	GEN COV AREA 2
108	Eclipse FC 26deg	A.129	18 (Loop Through)	Tour 4 Ch	FOH BAR 1	L253	GEN COV AREA 3
109	Eclipse FC 26deg	A.133	18 (Loop Through)	Tour 4 Ch	FOH BAR 1	L253	STAGE WASH SR
110	Eclipse FC 26deg	A.137	18 (Loop Through)	Tour 4 Ch	FOH BAR 1	L253	STAGE WASH SR



Elgiva Theatre  
 Fixture Patch Sheet March 2019  
 Rev 5.0

Fix No	Type	DMX ADD	Circuit	Mode	Position	Colour/Bdoor	Purpose
201	StudioCOB FC	B.41	39	5 Channel	LX BAR 1	BD	DS COLOUR WASH
202	StudioCOB FC	B.46	39	5 Channel	LX BAR 1	BD	DS COLOUR WASH
203	StudioCOB FC	B.51	39	5 Channel	LX BAR 1	BD	DS COLOUR WASH
204	StudioCOB FC	B.56	39	5 Channel	LX BAR 1	BD	DS COLOUR WASH
205	StudioCOB FC	B.61	51	5 Channel	LX BAR 2	BD	MS COLOURWASH
206	StudioCOB FC	B.66	51	5 Channel	LX BAR 2	BD	MS COLOURWASH
207	StudioCOB FC	B.71.	51	5 Channel	LX BAR 2	BD	MS COLOURWASH
208	StudioCOB FC	B.76	51	5 Channel	LX BAR 2	BD	MS COLOURWASH
209	StudioCOB FC	B.81	63	5 Channel	LX BAR 3	BD	US COLOUR WASH
210	StudioCOB FC	B.86	63	5 Channel	LX BAR 3	BD	US COLOUR WASH
211	StudioCOB FC	B.91	63	5 Channel	LX BAR 3	BD	US COLOUR WASH
212	StudioCOB FC	B.96	63	5 Channel	LX BAR 3	BD	US COLOUR WASH
301	Luma 700	B.101	Distro	Basic 16bit	LX BAR 1	N/A	DSR MOVING LIGHT
302	Luma 700	B.122	Distro	Basic 16bit	LX BAR 1	N/A	DSL MOVING LIGHT
303	Luma 700	B.143	Distro	Basic 16bit	LX BAR 2	N/A	MSR MOVING LIGHT
304	Luma 700	B.164	Distro	Basic 16bit	LX BAR 2	N/A	MSL MOVING LIGHT
305	Luma 700	B.185	Distro	Basic 16bit	LX BAR 3	N/A	USR MOVING LIGHT
306	Luma 700	B.206	Distro	Basic 16bit	LX BAR 3	N/A	USCR MOVING LIGHT
307	Luma 700	B.227	Distro	Basic 16bit	LX BAR 3	N/A	USCL MOVING LIGHT
308	Luma 700	B.248	Distro	Basic 16bit	LX BAR 3	N/A	USL MOVING LIGHT.

Elgiva Theatre  
 Fixture Patch Sheet March 2019  
 Rev 5.0

Fix No	Type	DMX ADD	Circuit	Mode	Position	Colour/Bdoor	Purpose
501	PLCYC-1 LED	B.271	75	8 BIT	LX BAR 4	N/A	CYC LIGHT
502	PLCYC-1 LED	B.280	75	8 BIT	LX BAR 4	N/A	CYC LIGHT
503	PLCYC-1 LED	B.289	75	8 BIT	LX BAR 4	N/A	CYC LIGHT
504	PLCYC-1 LED	B.298	75	8 BIT	LX BAR 4	N/A	CYC LIGHT
505	PLCYC-1 LED	B.307	75	8 BIT	LX BAR 4	N/A	CYC LIGHT
506	PLCYC-1 LED	B.316	75	8 BIT	LX BAR 4	N/A	CYC LIGHT
507	PLCYC-1 LED	B.325	75	8 BIT	LX BAR 4	N/A	CYC LIGHT
601	STAIRVILLE LED FLOOD 150	B.401	Distro	3CH	FLOATING	N/A	ADHOC USAGE
602	STAIRVILLE LED FLOOD 150	B.404	Distro	3CH	FLOATING	N/A	ADHOC USAGE
603	STAIRVILLE LED FLOOD 150	B.407	Distro	3CH	FLOATING	N/A	ADHOC USAGE
604	STAIRVILLE LED FLOOD 150	B.410	Distro	3CH	FLOATING	N/A	ADHOC USAGE
605	STAIRVILLE LED FLOOD 150	B.413	Distro	3CH	FLOATING	N/A	ADHOC USAGE
606	STAIRVILLE LED FLOOD 150	B.416	Distro	3CH	FLOATING	N/A	ADHOC USAGE
607	STAIRVILLE LED FLOOD 150	B.419	Distro	3CH	FLOATING	N/A	ADHOC USAGE
608	STAIRVILLE LED FLOOD 150	B.422	Distro	3CH	FLOATING	N/A	ADHOC USAGE
609	STAIRVILLE LED FLOOD 150	B.425	Distro	3CH	FLOATING	N/A	ADHOC USAGE
610	STAIRVILLE LED FLOOD 150	B.428	Distro	3CH	FLOATING	N/A	ADHOC USAGE
701	LED PAR	B.234	Distro	7 CH	LX BAR 4	N/A	BACKLIGHT
702	LED PAR	B.341	Distro	7 CH	LX BAR 4	N/A	BACKLIGHT

THE ELGIVA - LX CIRCUIT PLAN

75 76 77 78 79 80 81 82 83 84 85 86

STAGE DIPS  
91 92

LX 4

STAGE DIPS  
93 94

63 64 65 66 67 68 69 70 71 72 73 74

STAGE DIPS  
89 90

LX 3

STAGE DIPS  
95 96

51 52 53 54 55 56 57 58 59 60 61 62

STAGE DIPS  
87 88

LX 2

STAGE DIPS  
97 98

39 40 41 42 43 44 45 46 47 48 49 50

LX 1

FOH TABS

27 28

FOH 3

29 30

31 32

FOH 4

33 34

35 36

37 38

7 8 9 10 11 12 13 14 15 16 17 18 19 20 21 22 23 24 25 26

FOH 2

FOH 1 1 2 3 4 5 6



## Sound Equipment

### Control Room

1. 1 x Behringer X32 Digital Mixing Console
2. 1 x Tecpro Intercom system

**N.B.:** Any request for the sound console to be relocated for performances is not guaranteed and is chargeable.

### On Stage & FOH

1. 4 x MC2 T2000 Amplifiers (supplying left, right, centre & sub channels)
2. 2 x MC2 T1500 Amplifiers (supplying stage monitors)
3. 6 x EM Acoustics EM121 full range speakers (2 per side plus 2 centre FOH)
4. 2 x EM Acoustics EM81 full range speakers (1 per side FOH)
5. 2 x EM Acoustics EM215 sub bass speaker (1 per side)
6. 5 x dB Technologies Arena 12 passive monitor speakers

### Power

1 x Single-Phase 63A CEE Form supply (stage right) for use by visiting companies

### Patch bay (Stage rack to Control room)

1. 32 x send XLR
2. 6 x XLR/Speakon monitor sends

### Microphones

1. 8 x Red 5 Audio RVD30 (Vocal and Instrument Mic)
2. 2 x Shure SM58 (Vocal Mic)
3. 2 x Shure SM57 (Instrument Mic)
4. 1 x Beyer Dynamic 7 piece Drumkit Mic Set\*
5. 1 x RED5 Audio 7 Piece Drum Mic Set\*
6. 2 x Red5 RV85 Hanging Orchestra Condenser Mics
7. 4 x Behringer C2 Condenser Mics
8. 2 x T.Bone SC450 Large Condenser Mics
9. 2 x T.Bone EM9600 Shotgun Condenser Mics
10. 4 x T.Bone GZ400 Boundary Mics
11. 4 x Rode M3 Condenser Mics
12. 6 x Line 6 Digital Wireless Mics (packs with lav/headset boom mics)\*
13. 3 x Sennheiser G3 Radio Mics (packs with lav/headset boom mics)\*
14. 3 x Sennheiser G2 Radio Mics (packs with lav/headset boom mics)\*
15. 2 x Line 6 Hand Held Radio Mic\*
16. 2 x Sennheiser EW100 Radio Mics (packs with lav/headset boom mics)\*

### Miscellaneous

1. 2 x EMO Passive DI
2. 3 x BSS AR-133 Active DI
3. 2 x Studiospares Active DI
4. Various Boom and short Boom Mic Stands

\*Technical Services & Equipment Rate Card available upon request.

# The Elgiva

## Cinema & AV / Projection Equipment

### Digital Cinema

**NB:** Our Digital Cinema is fully DCI Compliant.

1. 1 x Barco D-Cine Premiere DP2K-10SX Projector
2. 1 x Doremi Showvault Server SV3-021014
3. 1 x Emerson 2u 1k UPS for projector and server
4. 1 x 8.53M (28') x 3.50M (11' 6") hard framed multi-perf cinema screen (flown)

### Digital Cinema Sound

1. 1 x Dolby CP750 Digital Cinema Processor
2. 3 x DNA 400 amplifiers
3. 3 x JBL 4671 Passive Speakers (flown with screen)
4. 4 x JBL 8320 Rear Surround Speakers
5. 8 x JBL Control 25 Left & Right Surround Speakers
6. 1 x Martin Audio 800W EM251 Sub-Bass Speaker

### Digital 3D Cinema

1. 2 x XpanD emitters
2. 300 x Xpand 101 active 3D glasses

### Satellite Streaming (Event Cinema)

1. 1 x 1.2m satellite dish
2. 1 x Icecrypt STC 6000HD PVR Satellite Receiver/Recorder

### Multiple Media Sources/Integration

1. 1 x Kramer VP728 scaler/switcher HD
2. 1 x Panasonic DMP-BDT120 Blu-Ray Disc Player
3. 1 x Sony MiniDisc Player

### Automation

1. 1 x Christie ACT Cinema Controller (for house lights, sound processor control, masking etc)

### Additional Data Projection

1. 1 x Optoma W505 DLP Projector with short throw lens and cradle (Cradle size: 58.5cm x 53cm x 25cm approx)\*
2. Draper Ultimate Folding Screen (Front or Rear Projection Screen) - 2m 91cm x 2m 15cm (10ft x 7ft approx) - with standard legs\*
3. 1 x Panasonic PT - D5000 XGA - DLP Projector with long throw lens (no cradle)
4. 1 x Optoma EH334 DLP Projector for small scale use, such as desktop presentations

**Note:** Access for audio links between our projection room patching and out control room can be provided.  
A cable run of 10m is recommended

Cat 5e links between control room and stage - 2 to SR, 1 to SL

\* Technical Services & Equipment Rate Card available upon request



## Yamaha C7 Baby Grand Piano



Colour: Black Polish

Length: 2m 27cm (7' 4")

Width: 1m 55cm (5' 1")

Height: 1m 5cm (41.5")

For hire rates, please see Technical Services & Equipment Rate Card (available upon request).

Piano Tuning is also chargeable and can be arranged in advance.



## Electrical Apparatus Form

**Hire Dates:** .....

**Function/Performance:** .....

**Hirer's Name:** .....

**Address:** .....

.....

**Tel No:** (daytime) ..... (evening) .....

1. PLEASE STATE BELOW ALL ELECTRICAL EQUIPMENT YOU WISH TO BRING IN AND USE ON YOUR FUNCTION/PERFORMANCE:

2. ALL ELECTRICAL EQUIPMENT SHOULD HAVE BEEN TESTED BY A QUALIFIED ELECTRICIAN WITHIN THE LAST 12 MONTHS AND BE OF A STANDARD COVERED BY CURRENT ELECTRICITY AT WORK REGULATIONS.

PLEASE STATE WHEN AND BY WHOM YOUR ELECTRICAL EQUIPMENT WAS TESTED.

..... Date: .....

Name: .....

Signature: .....

Position: .....